

FOUNDATION

A THRIVING, INCLUSIVE
& EQUITABLE TARANAKI



COLLABORATIVE
Purapura Whetū



FOCUSED
Niho Taniwha



INTEGRITY
Takitoru



INNOVATIVE
Poutama

RUATAKI MATUA | STRATEGIC PURPOSE

RUATAKI MATUA

Kia toka ia nei te ara whakakaha I te hāpori, kia toitū te whenua, kia toitū te tangata, kia toitū te maunga.

PURPOSE

To support our communities to build a thriving, inclusive and equitable Taranaki.

NGĀ UARATANGA | OUR VALUES



Purapura Whetū | **COLLABORATIVE**

- Together we are stronger
- Relationships are authentic, enduring and based on trust

The origins of this design can be found in a pattern known as purupuru whetū, representing the stars and the people or population of a region. The traditional meaning of this simple cross-stitch pattern tells us that to survive as an iwi, a hāpu, a whānau, we must have numbers, we must come together (just as the stars of the Milky Way), otherwise we may be wiped out. For Toi Foundation this design talks about enduring relationships – together we are stronger.



Niho Taniwha | **FOCUSED**

- Targeted philanthropic efforts on areas of greatest need
- Deliberate in our actions

Toi Foundation's targeting of philanthropic efforts on areas of greatest need is represented by the niho taniwha design – a saw-edged motif of tukutuku panels and tāniko weaving on the hems of cloaks. The teeth-like triangular shapes of niho taniwha are arranged in vertical rows with the apex at the top, symbolising strength, resilience and for some, the family houses within a tribe. We grow resilient communities by being deliberate in our actions.



Takitoru | **INTEGRITY**

- Open and trustworthy
- Value differences and knowledge within the community

Takitoru, a tukutuku pattern used on cross-beams and panels in meeting houses, comprises single stitches placed in groups of three, at alternate angles. It represents communication, identification and personal relationships. The sentiment sits with our efforts to be inclusive, open and trustworthy, and a commitment to value difference and knowledge within our community as we work together.



Poutama | **INNOVATIVE**

- Pursue the new
- Grow from success and learn from failure

The stepped pattern of poutama symbolises genealogies and various levels of learning and intellectual achievement. In meeting houses, poutama panels are traditionally used in mirror image, so that the steps climb upwards from both sides to reach the summit at the centre. As we pursue the new as an organisation, we grow from success and learn from failure.

Toi Foundation has four focus areas that will give effect and success to our purpose statement of a thriving inclusive and equitable Taranaki.

Central to the foundation's purpose is to prioritise Rangatiratanga | Empowering Māori Aspiration, The Environment, Child & Youth Wellbeing and funding where there is greatest need.

FOCUS AREAS

WHAT THIS LOOKS LIKE IN PRACTICE:

CHILD AND YOUTH WELLBEING

Prioritise Child and Youth Wellbeing by providing children and young people with the best start to life – with opportunities focused on health, education, culture, identity and parenting support. Dismantling systemic barriers for those most in need, building a stronger, more inclusive community for children, young people and their families.

We are deliberate in our approach to support the long-term mitigation of children and youth receiving unequal access or exclusion and will target areas to affect the greatest change.

RANGATIRATANGA | EMPOWERING MĀORI ASPIRATION

Prioritise Rangatiratanga and Māori-led solutions that ensure Māori ecosystems including whānau, Hapū, Iwi and mātāwaka are thriving across generations - with opportunities focused on Taranakitanga - Cultural Identity, Taiao - Environment & Guardianship, Mātauranga - Knowledge & Education and Oranga - Social & Economic Wellbeing.

Through increased relationships and equitable opportunities with and for Māori, we are deliberate in our approach to support the intergenerational wellness of Tangata Whenua, removing systemic barriers to economic, social and cultural inclusion.

IMPROVED ENVIRONMENT

Prioritise the protection and care of our natural environment to ensure the long-term vitality and resilience of Taranaki – with opportunities focused on ecological restoration, climate action, regenerative landscapes, and growing good food within a local economy that builds community not waste.

Toi Foundation is deliberate in our approach in responding to biodiversity and climate crises. We support a community empowered transition to a carbon neutral future, living in harmony with Taranaki Maunga and our regional ecosystem. We aim to dismantle barriers that prevent connecting with nature, building capability, and taking positive action in order for our people and environment to flourish.

INCREASED ACCESS TO OPPORTUNITIES

Increase people's ability to access and participate in opportunities that meet their needs and aspirations. Bringing people together to build feelings of belonging, inclusion and connectedness. Increase the skills and knowledge of the people and groups involved in our community.

OUR POU

Toi Foundation has three strategic pou;

- *Funding Pou*
- *Effective Organisation Pou*
- *Asset Management Pou*

These pou represent the key areas of the organisation.



The funding pou is first, this is deliberate as it represents the foundation's true philanthropic purpose. The Effective Organisation Pou and Asset Investment Pou are of high importance as they enable the foundation to financially undertake its grant making activity while having appropriate resources, systems and communication.



- Funding Pou is central to what we do and how we do it through investing in people, organisations and communities.
- Effective Organisation Pou represents governance, staffing, systems, policies and procedures.
- Asset Management Pou ensures we meet our responsibilities are resourced by providing a strong investment strategy with our assets.

FUNDING POU

Committed to equitable outcomes, removing systemic barriers and facilitating opportunities for our communities to achieve their goals.

OUR FUNDING APPROACH

The Taranaki community is at the heart of the foundation. Together we are stronger; this philosophy drives our approach as a philanthropic foundation, working collaboratively across Taranaki to drive our short term outcomes that enable our purpose of a thriving, inclusive and equitable Taranaki.

The foundation funds in traditional, philanthropic ways, while also looking to the future with a focus on strategic and innovative granting and impact investing to achieve even greater long-term, intergenerational and transformational benefits by funding where there is greatest need.



HOW WE FUND

STRATEGIC FUND:

We are focused on working strategically to achieve our purpose and the foundation's outcomes. We do this through supporting, facilitating and engaging in strategic and collaborative relationships and investments.

INNOVATION FUND:

We contribute to seed or scale opportunities that may have a high potential for impact and aligns strongly to the foundation's outcomes.

INVESTING FOR IMPACT FUND:

We make investments for impact with the intention of generating a measurable beneficial societal and/or environment impact alongside a financial capital and social return.

STRENGTHENING COMMUNITY FUND:

We understand the significance of our community grants towards supporting the fabric of our community. We are responsive to community requests that contribute to increased access to opportunities.

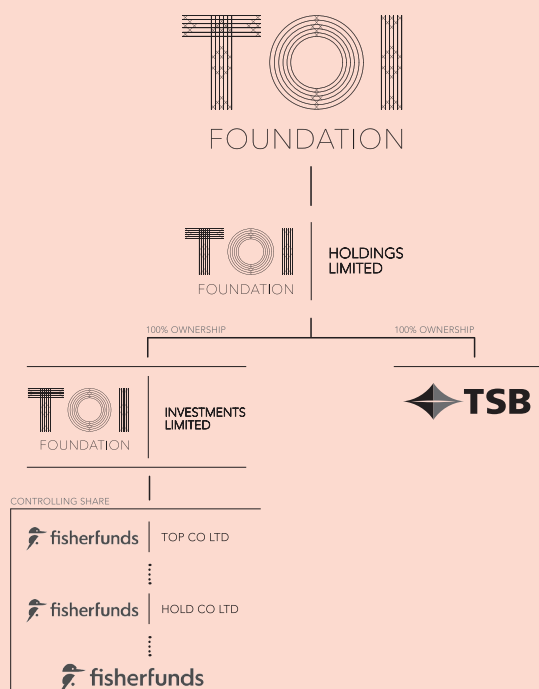
EFFECTIVE ORGANISATION POU

Appropriate resources, systems and communication to support our purpose.

We are an organisation that is focused on proactively working with others to contribute to the success and wellbeing of Taranaki and its people.

We are committed to upholding the principles of Te Tiriti o Waitangi: Partnership, Protection and Participation.

With effective Governance, Management and Staff, there are appropriate plans, policies and procedures so that our people, systems, technology and resources are fit for purpose and operate effectively to meet our strategy.



ASSET MANAGEMENT POU

An active asset owner with investment strategies to preserve and grow our capital in order to fund our communities, now and in the future.

We aim to preserve capital and maximise the funding available for granting and investing in our communities, with the flexibility to respond to opportunities as they arise.

We do this through oversight and direction of asset management and growth and procedures so that our people, systems, technology and resources are fit for purpose and operate effectively to meet our strategy.

Toi Foundation via its entity has a holding company that through its structure owns and monitors our key assets: 100% of TSB Bank Ltd (TSB), and a controlling share in Fisher Funds Management Ltd (Fisher Funds).

Each year, Fisher Funds and TSB pay dividends to the holding company. The holding company then pays dividends to Toi Foundation. These dividends enable the foundation to complete its philanthropic work. Therefore, if people bank with TSB and have their KiwiSaver with Fisher Funds, they contribute to the community.





TOI FOUNDATION WAIATA

Taranaki Maunga, Taranaki Tāngata

Taranaki maunga, Taranaki tāngata ē tū kau i te uru,
kina a-hau, ākina a-tai kia manawanui
He toi whenua, he toi tāngata, ko te whakakorikori ē
Te kaupapa o te waka nei, ko te oranganui ē
Tuia mai ko te tangata, ki ngā kaupapa nui ē,
ko te oranga mō te hāpori, ki te ata tauira
He toi whenua, he toi tāngata ko te whakakorikori ē
He toi whenua, he toi tāngata ko te whakakorikori ē

Taranaki Maunga, Taranaki communities

Along our western shores
Exposed to the elements, heavy winds and
strong swells - we stand resolute
Resolute in our commitment to empower and
enable - the region, land and people
Agents of beneficial change, connecting
people,
visioning positive opportunities without
boundaries
Resolute in our commitment to empower and
enable - the region, land and people
Resolute in our commitment to empower and
enable - the region, land and people



KO TE ORANGANUI TE WAKA, NGĀ HOE O UTA,
KO TE TIKA, KO TE PONO
KO TE MANAWANUI Ē
KO TARANAKI TE PUNGA
HE TOI WHENUA, HE TOI TANGATA, KI TE ATA, TAUIRA Ē

PHYSICAL ADDRESS: 21 Dawson Street | New Plymouth 4310 | Taranaki | New Zealand | (06) 769-9471
(0800) 769 9471 | EMAIL: info@toifoundation.org.nz | POSTAL ADDRESS: PO Box 667 | New Plymouth 4340

www.toifoundation.org.nz